

BREAD AS SCULPTURE
BREAD AS METAPHOR
BREAD AS CYCLE
BREAD AS IN THE WILD





CONTRIBUTING ARTISTS

QAMILLE ARMOUR
GRACIE LUZADER
KATELYN WADE
ANNIKA SCHALLER
AB HARRIS
TAYLOR STAPLES
MEGAN PAX
LOGAN CARRICO
CASSANDRA REEVES
LILY JOHNSON
CHLOE WEAVER
RACHEL BERG
SARAH FILLENWARTH
KYLIE OWENS
KATIE PAPAI
CASSIE POMIERSKI



3D FOUNDATIONS

WHAT IS BREAD WHEN WE PUT IT IN A NEW CONTEXT?

MAKING BREAD THAT WASN'T USEFUL WAS REALLY INTERESTING TO ME, BECAUSE ALTHOUGH I KNEW IT WAS DOUGH AS I WAS WORKING WITH IT, I TREATED IT AS JUST ANOTHER ART MATERIAL AND FORGOT ABOUT IT'S USUAL PURPOSE. I DIDN'T THINK ABOUT THIS UNTIL NOW, AND I THINK THAT IS REALLY COOL THAT I CHANGED THE WAY I THOUGHT ABOUT IT COMPLETELY AT THE TIME. - CHLOE WEAVER

IT WAS ACTUALLY REALLY FUN TO MAKE BREAD THAT WAS NOT USEFUL IN ANY WAY. IT ALLOWED ME TO NOT THINK SUPER HARD ABOUT WHAT I WAS MAKING AND JUST SEE WHAT HAPPENED AS I WENT ALONG WHICH WAS A FUN EXPERIENCE. - GRACIE LUZADER



IT WAS STRANGE TO MAKE BREAD THAT WASN'T GOING TO BE USED AS FOOD. EVERY TIME I HAVE ANY INVOLVEMENT WITH BREAD IS WHEN IT'S FOOD, SO IT DEFINITELY GAVE ME A DIFFERENT PERSPECTIVE. I'VE ALWAYS THOUGHT DOUGH WAS INTERESTING AND WONDERED WHAT ELSE I COULD DO WITH IT, SO DOING THE EXERCISE IN CLASS ANSWERED THAT QUESTION. IT HONESTLY FELT A LITTLE WASTEFUL, BUT I THINK THAT'S BECAUSE THE CONTEXT OF BREAD = FOOD IS DRILLED INTO MY HEAD. - MEGAN PAX

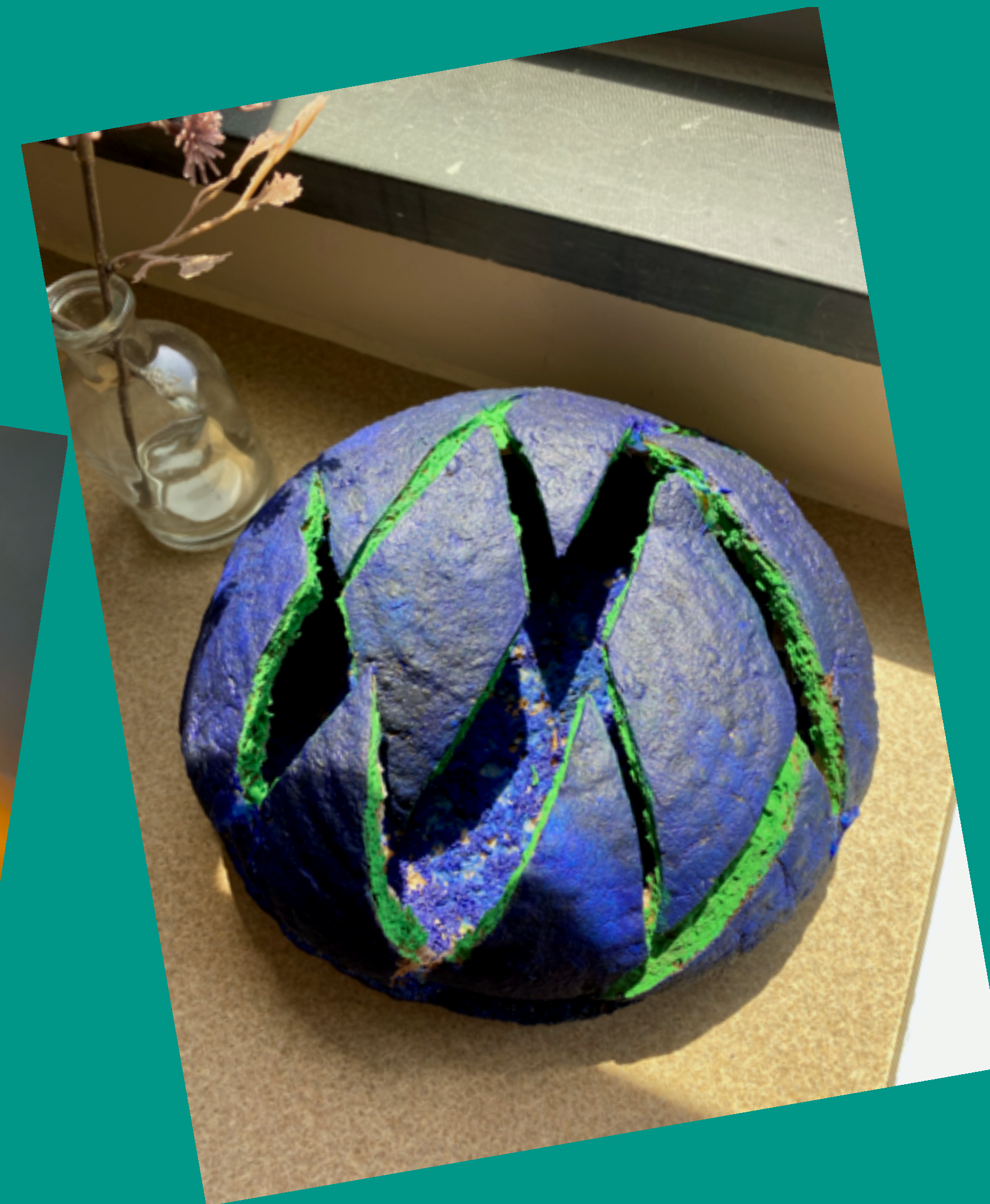




BREAD AS METAPHOR

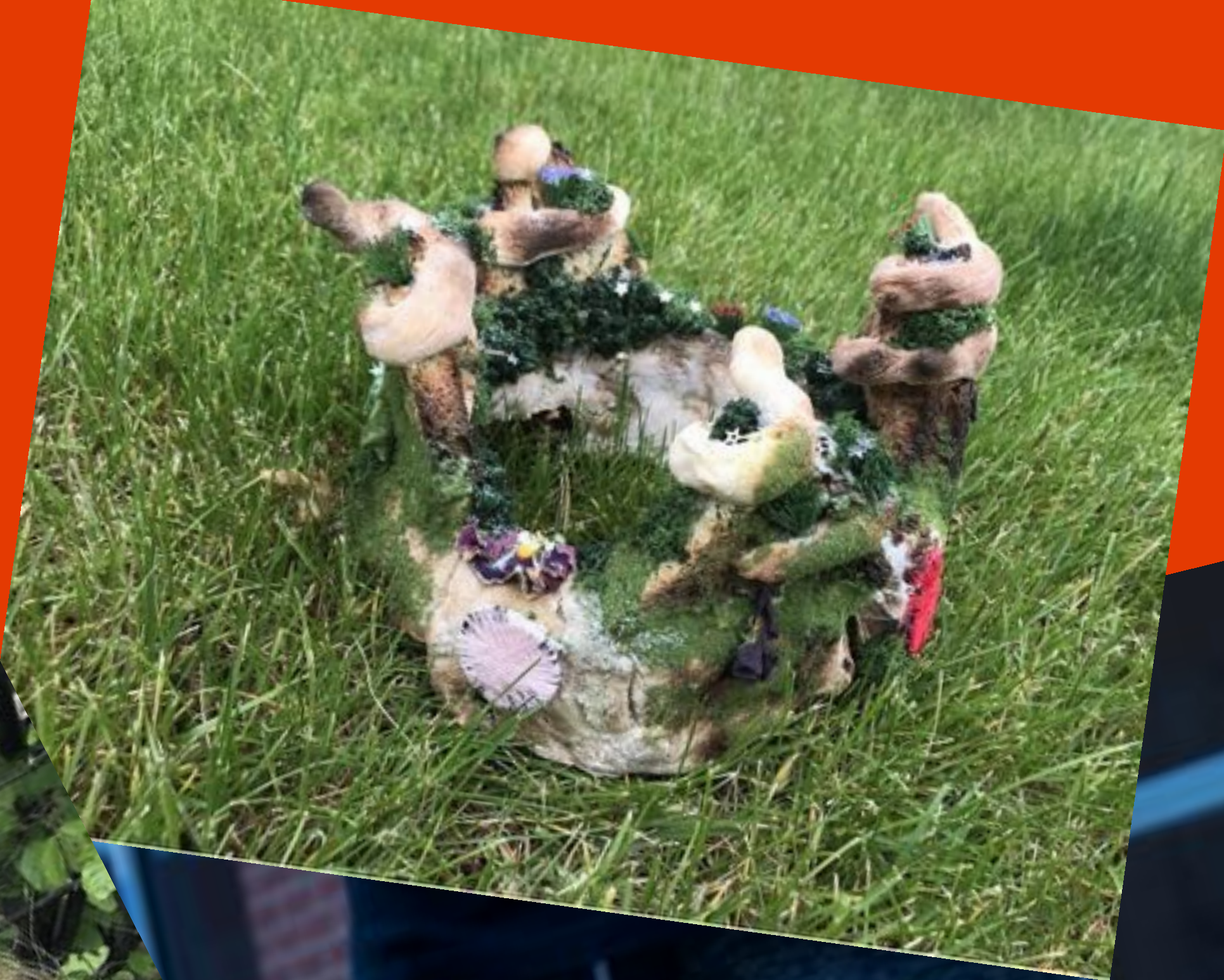
CASSIE POMIERSKI

FROM A SPIRITUAL AND SYMBOLIC POINT OF VIEW, I DECIDED TO MAKE A LANTERN SINCE LIGHT WOULD BRING MORE LIFE TO THE BREAD, AND SINCE IT'S A UNIVERSAL SYMBOL OF GOODNESS. LIGHT ILLUMINATES OUR EARTH AND HELPS US FIND OUR WAY. WITHOUT LIGHT- WE'D BE LOST IN THE DARK! LIGHT ALSO NOURISHES US AND KEEPS US ALIVE AND HEALTHY, WHICH IS WHY I THOUGHT AN ADDITION OF LIGHT TO THE BREAD WOULD CREATE A REALLY INTERESTING AND MEANINGFUL SCULPTURE.



TAYLOR STAPLES

I WANTED TO KIND OF PLAY WITH THE IDEA OF SELF-LOVE AND HOW EVERYBODY SHOULD TREAT THEMSELVES LIKE ROYALTY. I HAD A SECOND IDEA TO CREATE A TREE WITH A TON OF BRAIDED ROOTS COMING FROM THE BOTTOM TO REPRESENT MY GROWTH IN MY FRESHMAN YEAR OF COLLEGE. ANNA GAVE ME THE IDEA TO COMBINE THEM! SO MY FINAL IDEA WILL STILL BE A CROWN BUT INSTEAD OF THE "SPIKES" AND THE TOP, I'M MAKING ROOTS! I'VE GROWN A LOT THIS PAST YEAR AND THIS IS ALMOST LIKE THE REWARD FOR GETTING THROUGH IT.



SARAH FILLENWARTH



WHY A BIRD'S NEST? THERE ISN'T AN EXACT ANSWER. IT COULD BE FOR MY GRANDMA WHO LOVES WATCHING HER BLUE BIRDS AND HUMMINGBIRDS THAT REMIND HER OF HER FAMILY WHO HAS PASSED. IT COULD BE BECAUSE IT WAS THE ONE OF THE FIRST THINGS THAT POPPED INTO MY MIND. THERE ARE A LOT OF REASONS WHY I COULD SAY THAT I PICKED IT, BUT NO SPECIFIC ANSWER. IT CAME DOWN TO MOST OF MY BREAD BEING STALE AND ME THINKING OF THE CRUMBS THAT IT LEFT BEHIND AS SOMETHING BIRDS WOULD EAT.

KATELYN WADE



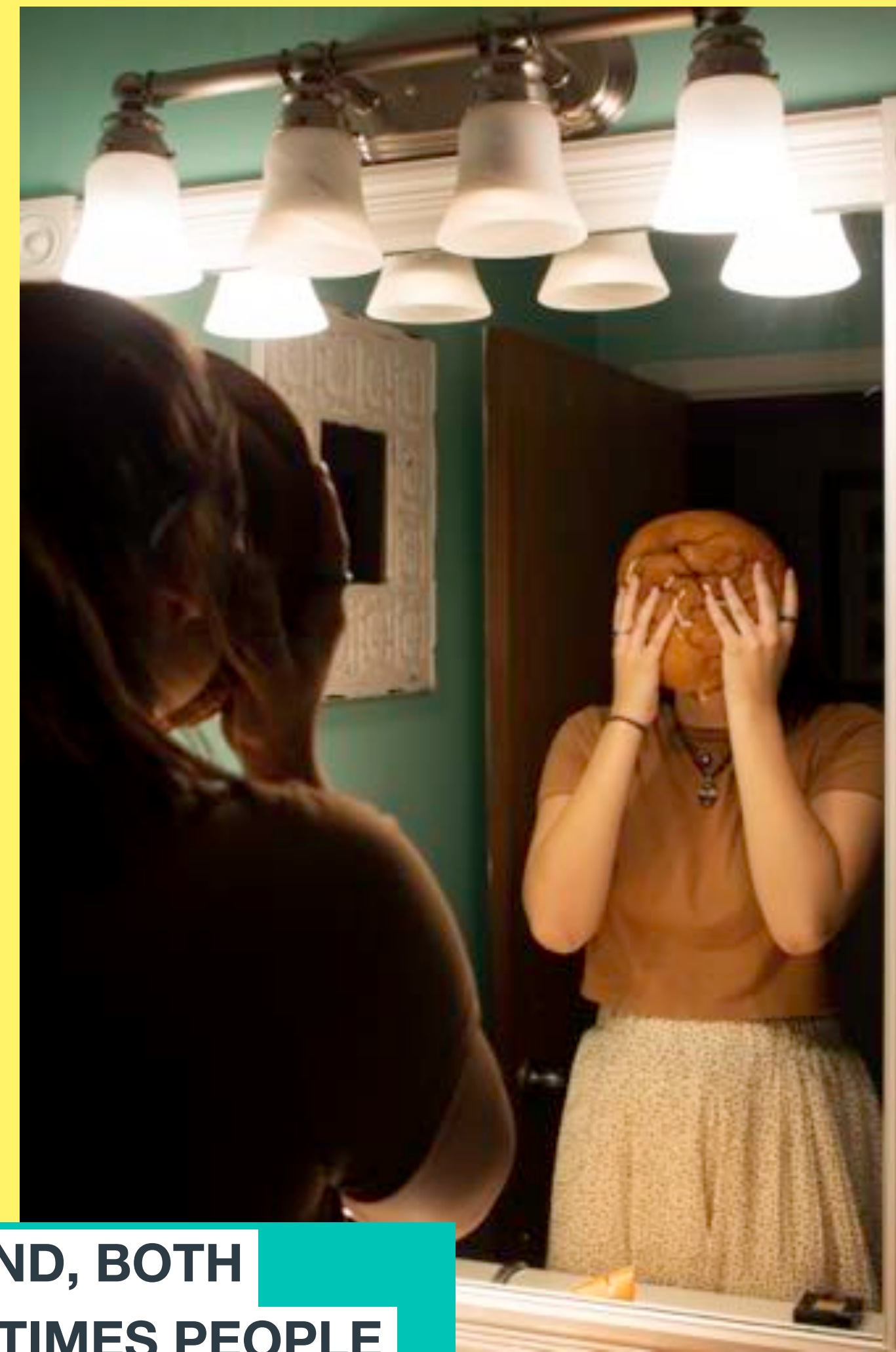
I FEEL THAT SO MANY PEOPLE USE BREAD AS A COPING MECHANISM (BINGE EATING) WHEN THEY ARE OVERWHELMED. THEREFORE I FEEL THAT BREAD IS SO MUCH MORE THAN JUST A FOOD, IT IS AN ACT OF EXPRESSION ALONG WITH COMFORT. LIKewise TO A HAT THAT YOU CAN ALSO USE TO EXPRESS YOURSELF AND HIDE AWAY IN FROM THE WORLD. ADDITIONALLY THAT GAVE ME THE IDEA TO JUST COMBINE THE TWO AND CREATE SOMETHING THAT REPRESENTS A HARMONY. LAST TIME I MADE A MASK ALSO AND I FEEL THAT THIS WILL GO ALONG WITH MY THEME OF HIDING FROM THE WORLD.





I KNOW THAT SOURDOUGH STARTER IS A LIVING FRIEND (CULTURE) THAT'S MADE OF WATER AND FLOUR! YOU FEED IT A BIT OF FLOUR AND WATER A DAY AND IT GROWS. IT MAKES ME THINK OF THE STEREOTYPICAL TV TROPE WHERE THE HIGH SCHOOLERS ARE SET UP IN PAIRS, AND HAVE TO TAKE CARE OF A BAG OF FLOUR, AND HIJINKS ENSUE. I THINK IF I MADE MY OWN THING OF SOURDOUGH STARTER, I'D CALL IT AUDREY 2 ("FEED ME, SEYMOUR!") - AB HARRIS

GRACIE LUZADER



THE CONCEPT BEHIND MY IDEA IS THE IDEA OF THE MASKS THAT PEOPLE HIDE BEHIND, BOTH METAPHORICAL AND PHYSICAL. EVERYONE HAS THEIR OWN PERSONALITY, BUT A LOT OF TIMES PEOPLE CHANGE WHO THEY ARE DEPENDING ON THE PEOPLE THEY ARE AROUND. EVEN THOUGH YOU MAY FEEL LIKE YOU ARE BEING YOURSELF, PERSONALITIES CHANGE CONSTANTLY. WITH EVERYTHING HAPPENING IN THE WORLD SURROUNDING THE PANDEMIC, PHYSICAL MASKS HAVE BECOME A CONSTANT THING IN EVERYONE'S LIVES. A LOT OF PEOPLE SORT OF HIDE BEHIND THEM, WITHOUT EVEN MEANING TOO. THE BREAD MASKS THAT I WILL BE PUTTING ON MY MODELS WILL REPRESENT THESE IDEAS AND THE CHANGING ENVIRONMENT THAT WE ARE LIVING IN.

LILY JOHNSON



MY IDEA BEHIND THIS IS BREAD BEING A COMFORT FOOD SO I WANTED TO CREATE SOMETHING COMFORTING LIKE A QUILT TO RESEMBLE THIS. I ALSO TIE THIS PROJECT TO BEING ABLE TO SIT AT COMFORT WITH YOURSELF AND LOVE WHO YOU ARE AND BE AT INNER PEACE.

CHLOE WEAVER

WHEN I LOOK AT BREAD AS AN ART MATERIAL, I IMMEDIATELY SEE ABSTRACTION FOR MY ARTWORK, AND IT MAKES ME WANT TO RELY SOLELY ON EXPERIMENTATION AND THE PROCESS. FOR MY FINAL ARTWORK, I AM CREATING AN ABSTRACT BREAD SCULPTURE OF TWO BIG PIECES OF BREAD THAT HAVE ALREADY BEEN BAKED WITH A VARIATION OF SIZES OF DOUGH BRAIDED ALL OVER THE BAKED BREAD. I'M CREATING BRAIDED DOUGH AND LAYING THEM IN DIFFERENT WAYS HANGING OFF AND WIGGLING AROUND TO MAKE THEM FEEL AND LOOK ALIVE. THE BRAIDS GLOW AND SPREAD AROUND THE SURROUNDING DARKENED BREAD UNIFYING THEM TOGETHER. FOR THE REMAINDER OF THE PROJECT, MORE DOUGH WILL BE ADDED TO EMPHASIZE THE ALIVENESS OF THE DOUGH'S MOVEMENT. ALSO, I WILL ADD THREAD TO CONNECT THE BIG PIECES OF BAKED BREAD, TO NOT JUST CREATE A DESIGN, BUT TO BRING THEM TOGETHER.



AB HARRIS



MY ARTWORK IS A PERFORMANCE PIECE AND A SCULPTURE OF A HUMAN FACE THAT IS REVEALED AFTER LAYERS OF BREAD AND DOUGH ARE REMOVED. THE HUMAN FACE IS SKINNED ALIVE. THIS IS A REFERENCE TO THE STORY OF ST. BARTHOLOMEW IN THE BIBLE, WHO WAS SKINNED AND DECAPITATED. THE THEMES I WISH TO IMPLEMENT IN THIS PIECE IS HUMANITY AND VIOLENCE. I ACT THE PERSON WHO IS RIPPING OFF THE SUBJECT'S "SKIN," AND ARE INFLICTING AN ACT OF VIOLENCE ON MY OWN ART.

IS BREAD ALIVE?



DOUGH IS AS ALIVE AS PEOPLE WANT IT TO BE. TO BE ABLE TO BREAK BARRIERS WITH THE DOUGH AND CREATE ARTWORK WITH IT GIVES A NEW PERSPECTIVE. WE AREN'T EATING IT, WE ARE FORMING IT AND CREATING IT IN WHATEVER WAY WE WANT TO CREATE IT. THIS GIVES IT LIFE AND IT'S ECOLOGY BRINGS IT TO LIFE EVEN MORE-
CHLOE WEAVER

BREAD IS MADE BY FERMENTATION, WHICH INVOLVES LIVE CULTURES AND BACTERIA (LIVE ORGANISMS). IT RISES AND "BREATHES" ON IT'S OWN AS IT SITS AND BAKES! WE JUST HELP START THE CHEMICAL REACTION BY MIXING THE INGREDIENTS AND SUPPLYING HEAT. - **CASSIE POMIERSKI**

DOUGH IS ALIVE, IT HAS CERTAIN BACTERIA IN IT LIKE A MUSHROOM. - **QAMILLE ARMOUR**

BREAD AS CYCLE



QAMILLE ARMOUR



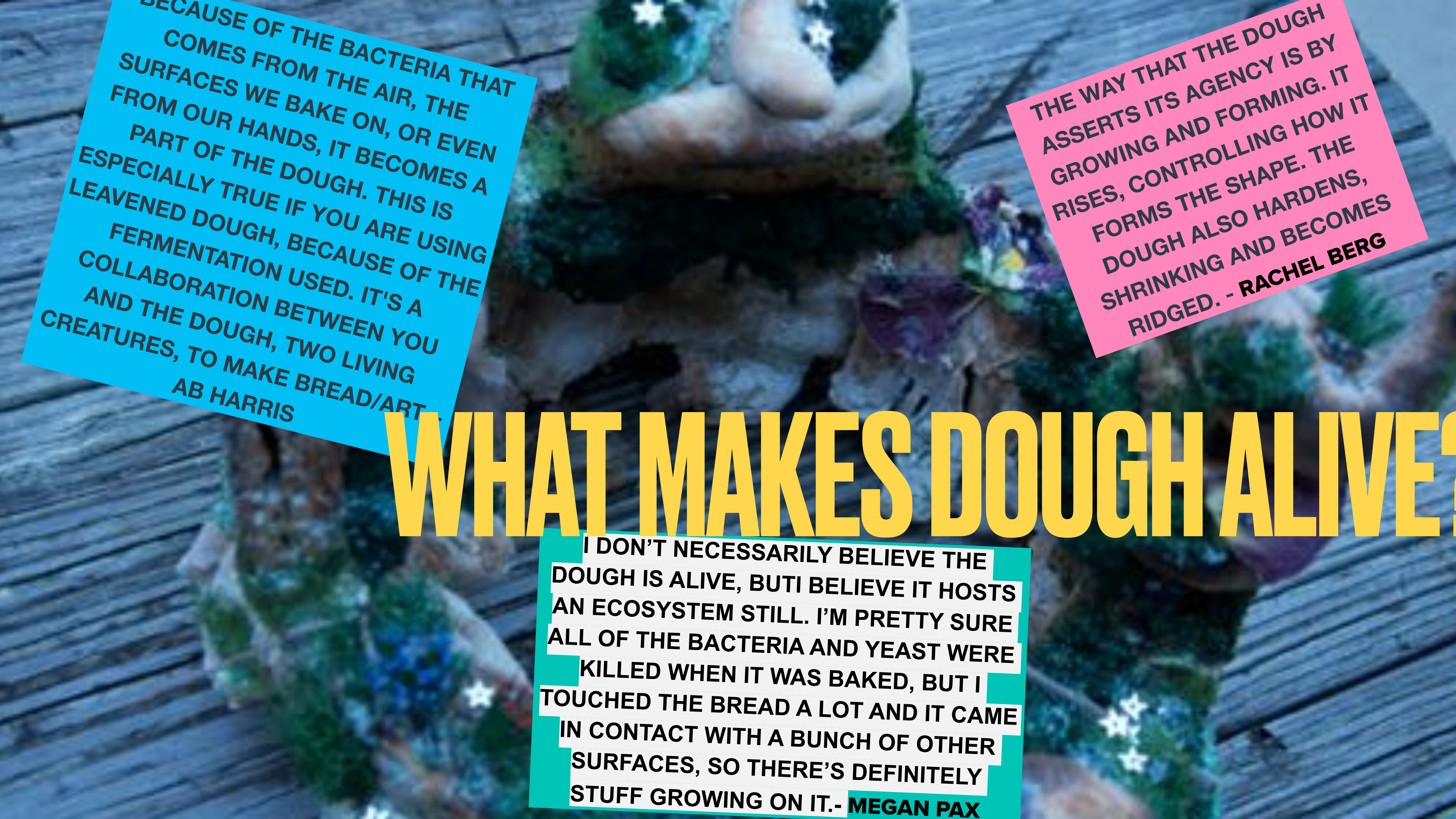
WE LIVE IN A SOCIETY WHERE BLACK AND LATINO AMERICANS ARE ALWAYS THE THREAT. IT DOESN'T MATTER THE AGE, PERSONALITY, OR VALUE OF THAT PERSON. WE LIVE IN A WORLD WHERE WE CAN'T EVEN TRUST THE POLICE. OUR LIVES CAN BE CHANGED IN A INSTANT. ERIC GARNER, SANDRA BLAND, GEORGE FLOYD, ADAM TOLEDO, MA, KHIA BRYANT, ETC. I DECIDED TO GO WITH THIS DURING THIS PROJECT, BECAUSE THE ENTIRE TIME WE WERE DOING THIS. WE ONLY LEARNED ABOUT HOW BREAD IS ALIVE, NEVER FOCUSED ON HOW BREAD EXPIRES. BREAD GOES THROUGH AND AMAZING CYCLE BUT ENDS IN THE TRASH.

BECAUSE OF THE BACTERIA THAT COMES FROM THE AIR, THE SURFACES WE BAKE ON, OR EVEN FROM OUR HANDS, IT BECOMES A PART OF THE DOUGH. THIS IS ESPECIALLY TRUE IF YOU ARE USING LEAVENED DOUGH, BECAUSE OF THE FERMENTATION USED. IT'S A COLLABORATION BETWEEN YOU AND THE DOUGH, TWO LIVING CREATURES, TO MAKE BREAD/ART. - AB HARRIS

THE WAY THAT THE DOUGH ASSERTS ITS AGENCY IS BY GROWING AND FORMING. IT RISES, CONTROLLING HOW IT FORMS THE SHAPE. THE DOUGH ALSO HARDENS, SHRINKING AND BECOMES RIDGED. - RACHEL BERG

WHAT MAKES DOUGH ALIVE?

I DON'T NECESSARILY BELIEVE THE DOUGH IS ALIVE, BUT I BELIEVE IT HOSTS AN ECOSYSTEM STILL. I'M PRETTY SURE ALL OF THE BACTERIA AND YEAST WERE KILLED WHEN IT WAS BAKED, BUT I TOUCHED THE BREAD A LOT AND IT CAME IN CONTACT WITH A BUNCH OF OTHER SURFACES, SO THERE'S DEFINITELY STUFF GROWING ON IT. - MEGAN PAX



KYLIE OWENS



THE INFINITY DRAGON IS A JAPANESE STYLE DRAGON WITH NO WINGS FORMED IN A CONTINUOUS CIRCLE. IT'S TAIL IS IN IT'S MOUTH AS IF IT'S EATING ITSELF, AND MUCH LIKE BREAD IT IS BOTH LIVING AND DYING AT THE SAME TIME. WHEN BREAD IS MADE, THE DOUGH IS CREATED THROUGH A PROCESS INVOLVING LIVING ORGANISMS. THEN, WHEN THE BREAD IS BAKED, THESE ORGANISMS DIE. HOWEVER, ONCE THE BAKED BREAD IS BROUGHT OUT OF THE OVEN, ORGANISMS FROM THE AIR AND OTHER ELEMENTS ATTACH TO THE BREAD AND IT BEGINS TO EVENTUALLY MOLD, CREATING NEW LIFE.

MEGAN PAX



I HAD THIS IDEA FLOATING AROUND IN MY BRAIN THAT I WANTED TO MAKE A PART OF THE HUMAN BODY; I THOUGHT THIS WOULD EASILY CONNECT TO THE IDEA OF LIVING THINGS THAT WE'VE BEEN DISCUSSING IN CLASS. OUR BODIES CONSTANTLY ARE GOING THROUGH STAGES OF REGROWTH AND DYING (CELLS), SO I THOUGHT DOING A BODY PART WOULD BE INTERESTING.

LOGAN CARRICO



I THINK THAT BREAD REPRESENTS THE BRAIN IN MANY WAYS. BREAD DIFFERS COMPARED TO ITS SURROUNDINGS MUCH LIKE HOW HUMANS ARE AFFECTED BY OUR ENVIRONMENT AND OUR EXPERIENCES. BREAD GOES THROUGH CYCLES: DOUGH -> BREAD -> MOLD -> REPEAT. THE BRAIN GOES THROUGH CYCLES AS WELL: PEACEFUL/HAPPY STATE OF MIND -> GROWTH -> STRESS/BURNOUT -> RECOGNIZE POOR MENTAL HEALTH -> REPEAT ALTHOUGH MOLD IS NOT VERY PLEASANT TO DEAL WITH, ITS NECESSARY FOR YOU TO KNOW THAT YOU NEED TO MAKE NEW BREAD/ REPEAT THE CYCLE.

DOUGH IS ABSOLUTELY ALIVE! THE FERMENTATION PROCESS OF THE YEAST AND ALL THE OTHER INGREDIENTS MAKE IT ALIVE. THERE IS AN ENTIRE ECOSYSTEM IN A PIECE OF BREAD, AND AFTER IT IS BAKED IT IS TECHNICALLY 'DEAD'. - SARAH FILLENWARTH

BREAD DOUGH IS 100% ALIVE. IT'S ALL THANKS TO YEAST! YEAST IS AN ORGANISM, IT RELEASES CARBON DIOXIDE WHEN ACTIVATED, JUST LIKE HUMANS RELEASE CARBON DIOXIDE WHEN THEY EXHALE. - TAYLOR STAPLES

DOUGH IS DEFINITELY ALIVE. IT CONTINUES TO GROW UNTIL IT'S BAKED BECAUSE OF BIOLOGICAL LEAVENING AGENTS THAT CREATE GASES THAT KEEP THE DOUGH GROWING. THESE ARE LITERALLY MICROSCOPIC ORGANISMS THAT INTERACT WITH THE DOUGH. ADDITIONALLY, ONCE THE DOUGH IS BAKED, THE BREAD IS ABLE TO MOLD AND DECAY WHICH FURTHER MAKES ME BELIEVE THAT IT IS ALIVE. - LILY JOHNSON



RACHEL BERG



BREAD IS ALIVE AND CAN GROW,
INHABITING BACTERIA AND ORGANISMS.
I WANTED THE LIFE CYCLE OF A
CATERPILLAR TO A BUTTERFLY TO
REFLECT THIS IDEA.



ANNIKA SCHALLER



THE DOUGH IS SUPPOSED TO EMULATE HOW INVASIVE SPECIES LIKE KUDZU CAN CLIMB OVER BUILDINGS AND OTHER TREES AND TAKE THEM OVER. IT WILL ALSO BE RISING DOUGH, AND I'M HOPING THAT IT WILL BUBBLE UP AND MOVE A LITTLE MORE ORGANICALLY.

CASSANDRA REEVES

KATIE PAPAI

A LIVE AQUARIUM! I SAY LIVE FOR MANY REASONS. WE ARE ONLY USING EATABLE ITEMS INCLUDING DIFFERENT TYPES OF BREAD FOR THE STRUCTURE AND WALLS. THEN WE ARE USING DOUGH FOR ALL OF OUR SEA ELEMENTS. FOOD IS ALIVE IN GENERAL, IT TURNS TO LIVE ENZYMES IN YOUR BODY AND HAS ACTIVE GOOD AND BAD BACTERIA. ALSO, SOME OF OUR BREAD IS MOLDING WHICH JUST SHOWS HOW ALIVE IT ACTUALLY IS. THE MOLD ALSO GIVES AN ALGAE SEAWEED TYPE LOOK THAT WORKS REALLY WELL WITH OUR IDEA! ALSO, OUR SEA CREATURES ARE REPRESENTED LIVE ANIMALS THAT LIVE ON OUR EARTH, AND WE ALSO USED RISING DOUGH WHICH IS A LIVE DOUGH.

BREAD AS IN THE WILD



THANK YOU! IT HAS BEEN A TOTAL PLEASURE TO SEE YOU ALL FLEX YOUR CREATIVE MUSCLES AND THINK OUTSIDE WHAT YOU ARE USED TO. WE MADE SO MANY BEAUTIFUL LIVING BREAD SCULPTURES, I AM SO PROUD.

**WITH GRATITUDE,
ANNA**